



Aluminum Alloy Trim Tabs



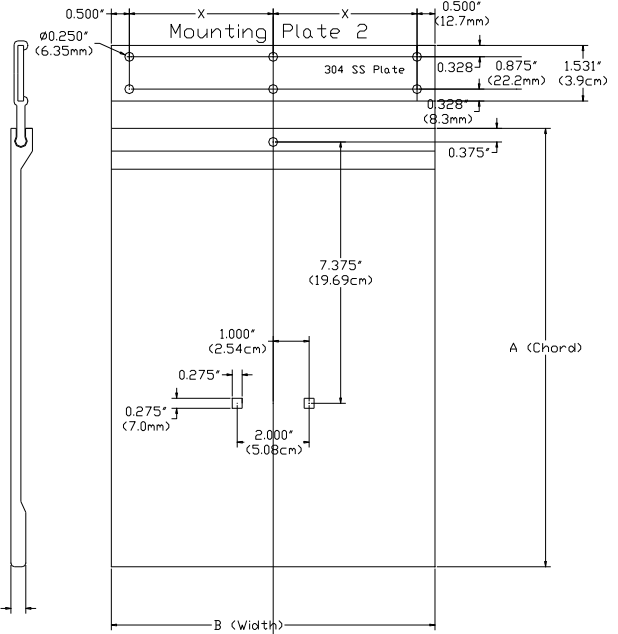
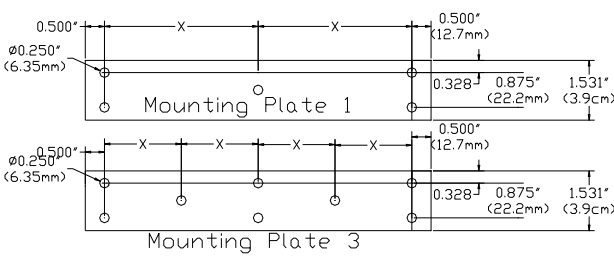
The Lectrotab aluminum alloy trim tabs are uniquely designed to meet the needs of aluminum hulled boats and are an economical option for all boats. All aluminum alloy tabs are fabricated with an extremely strong “no-break” polypropylene hinge. The tabs are made of marine grade 6005-T5 aluminum alloy material that is equivalent in strength to 10 gauge stainless steel. All aluminum tabs are sealed with a corrosion resistant epoxy coating. Standard tabs are available in 9” (23cm) and 12” (30cm) chord lengths (chord is the length from the transom to the tab trailing edge) and in widths between 9” (23cm) and 48” (122cm). See specification chart for dimensional details. Custom designed tabs are also available with drop fins or supports.

Lectrotab specializes in providing customized tab designs. Please contact Lectrotab for your specific tab needs.

FEATURES

- Marine grade 6005-T5 aluminum alloy material
- All Tabs sealed with a corrosive resistant epoxy coating
- Equivalent strength to 10 gauge stainless steel
- “No Break” polypropylene hinge tested over 300,000 cycles to a 90° bend without failure
- Standard chord lengths available in 9” (23cm) and 12” (30cm) and widths from 9” (23cm) to 48” (122cm)
- Dual actuator mounting available
- Less expensive compared to stainless steel tabs
- Zinc anodes may be installed for additional galvanic corrosion resistance
- Custom drop fin designs available
- Includes carriage bolts and nuts for actuator mounting to tab

ALUMINUM ALLOY TAB DIMENSTIONS



Tab Width "B"	Dimension "X"	Mounting Plate
9"/23cm	3.5"/8.9cm	1
12"/30cm	5"/12.7cm	2
16"/41cm	3.5"/8.9cm	3
18"/46cm	4"/10.2cm	3
20"/51cm	4.5"/11.4cm	3
22"/56cm	5"/12.7cm	3
24"/61cm	5.5"/14cm	3
25"/64cm	5.75"/14.6cm	3
30"/76cm	3.5"/8.9cm	3
36"/91cm	4.25"/10.8cm	3
42"/107cm	5"/12.7cm	3
48"/122cm	5.75"/14.6cm	3

ALUMINUM ALLOY TAB MODEL IDENTIFICATION

TA	12	X	12
TA = Aluminum Alloy Trim Tab	1st Number (A) = Tab Chord Length (inches)		2nd Number (B) = Tab Width Across Transom (inches)

SPECIFICATIONS

Model Number	Tab Size		Typical Boat Length	
	Inches	cm	Feet	Meters
TA9X9	9x9	23x23	14'-19'	4.0m-6.0m
TA9X12	9x12	23x30	16'-25'	5.0m-7.5m
TA9X16	9x16	23x41	18'-28'	5.5m-8.5m
TA9X18	9x18	23x46	21'-30'	6.5m-9.0m
TA9X20	9x20	23x51	23'-35'	7.0m-10.5m
TA9X24	9x24	23x61	24'-37'	7.0m-11.0m
TA9X25	9x25	23x64	24'-37'	7.0m-11.0m
TA9X30	9x30	23x76	30'-45'	9.0m-13.5m
TA9X36	9x36	23x91	35'-54'	10.5m-16.5m
TA12X9	12x9	30x23	18'-29'	5.5m-8.5m
TA12X12	12x12	30x30	18'-32'	5.5m-9.5m
TA12X16	12x16	30x41	18'-35'	5.5m-10.5m
TA12X18	12x18	30x46	20'-40'	6.0m-12.0m
TA12X20	12x20	30x51	20'-45'	6.0m-14.0m
TA12X24	12x24	30x61	28'-48'	8.5m-14.5m
TA12X25	12x25	30x64	28'-48'	8.5m-14.5m
TA12X30	12x30	30x76	30'-55'	9.0m-16.5m
TA12X36	12x36	30x91	34'-60'	10.0m-18.0m
TA12X42	12x42	30x107	50'-70'	15.0m-21.0m
TA12X48	12x48	30x122	60' +	18.0m +

Linear Devices Corporation
 8790 Park Central Drive, Richmond, VA 23772
www.lectrotab.com, Ph 804-261-3888, Fax 804-264-3070
 January 2011

