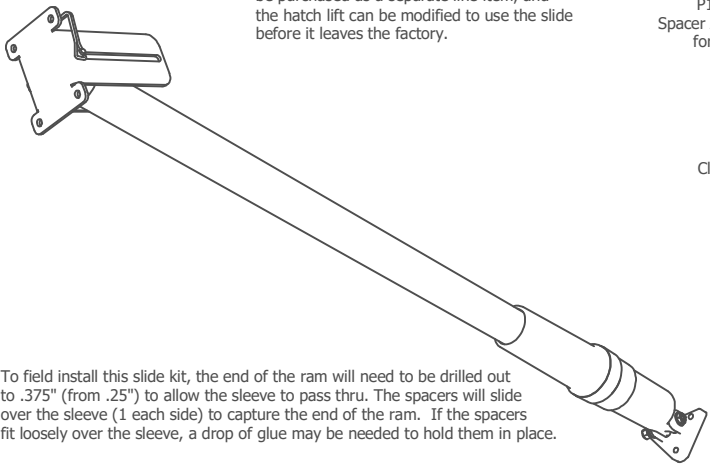
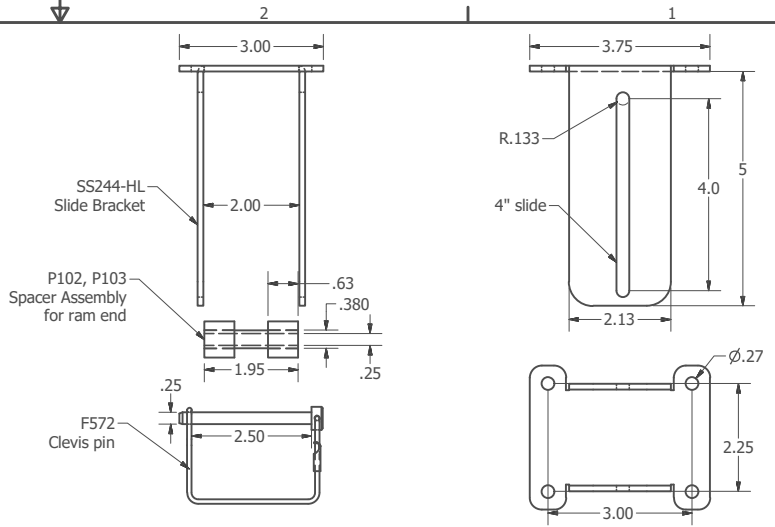


The slide mount kit: HL-SM will include the slide bracket, spacer assembly and clevis pin. The spacer assembly is designed to attach to the ram, so if the clevis pin is removed, the spacers will not fall into the bilge or get lost. We use a wire lock, clevis pin (F572) for quick, toolless removal. We suggest using this slide mount primarily on engine covers but is suitable for any hatch that may need access during a power failure. The slide mount assembly can be purchased as a separate line item, and the hatch lift can be modified to use the slide before it leaves the factory.



To field install this slide kit, the end of the ram will need to be drilled out to .375" (from .25") to allow the sleeve to pass thru. The spacers will slide over the sleeve (1 each side) to capture the end of the ram. If the spacers fit loosely over the sleeve, a drop of glue may be needed to hold them in place.



Slide Mount Kit: "HL-SM"

DRAWN	12/6/2023	<b>LECTROTAB</b>	Linear Devices Corp. 11126 Air Park Rd., Suite G Ashland, VA. 23005 (804)368-8428	
CHECKED			TITLE	
QA			HL-SM, Slide Assembly use with H-BK Hatch Lifts	
MFG			SIZE	DWG NO
APPROVED		B	MD-120823	F
		SCALE	.25	SHEET 3 OF 4